

Open the dust cap

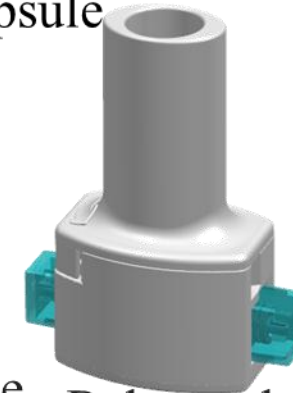
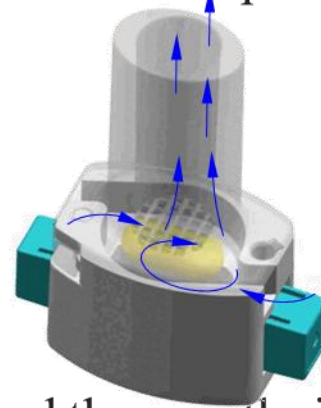
Unscrew the mouthpiece and put in the capsule.

Close the mouthpiece and press to pierce the capsule

Rinse the mouth with clean water to remove the residual drug in the mouth; wipe and clean the inhaler and close the cap.



Place the mouth around the mouthpiece and inhale forcefully, then hold the breath for 10 seconds. The drug powder is delivered to the patient's respiratory tract and lungs.



Release the button. The patient exhales the air from the lungs